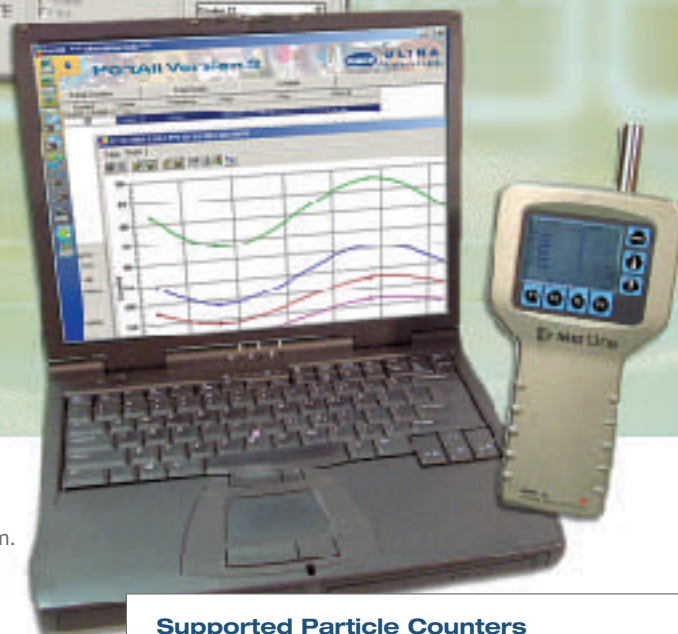


# Schedule and automate with PortAll® Version 2 Software

FOR HANDHELD AND PORTABLE PARTICLE COUNTERS

Working with your handheld and portable device, PortAll Version 2 simply and easily organizes archives and retrieves particle count data.

Supports  
21 CFR Part 11  
compliance



particles

1.0 µm

## Gown up less

PortAll's scheduling feature automates particle counting and data collection. Get inside data conveniently from outside the cleanroom.

## Report with ease

A Windows®-based software interface and report wizard makes calculation and presentation of ISO14644 and FS209E easy. Name individual particle counters to provide reporting from multiple counters for the same location.

## Simplify validation

Verify adherence to standards and regulations, including ISO and 21 CFR Part 11. The software also supports conducting rapid pass/fail reporting and documentation.

## Expand your particle counter's capabilities

PortAll Version 2 expands the functionality of PortAll 1.0 to include:

- Communication with Met One HHPC-2 and HHPC-6 particle counters
- Password authentication and management
- Auto logoff
- Lockout after failed log in attempts
- Secure data
- BS5295 calculation
- Pre-configuration of particle counters
- User-defined counter identifier

## Supported Particle Counters

| Handhelds | Portables | Portables for Water |
|-----------|-----------|---------------------|
| HHPC-2    | 237       | WGS267              |
| HHPC-6    | 2100/2200 |                     |
| 227       | 2400/2408 |                     |
|           | 3313/3315 |                     |
|           | 1104 CNC  |                     |



**ULTRA**  
ANALYTICS

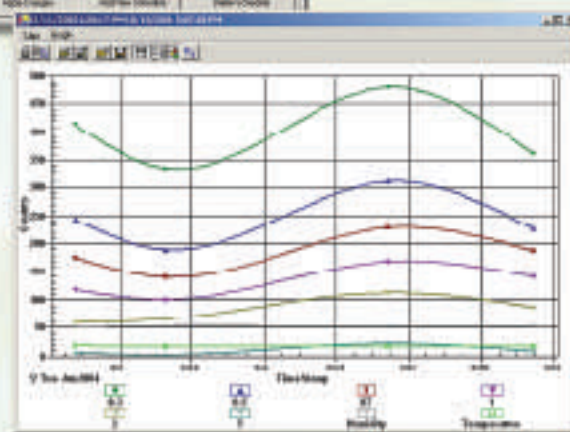
# PortAll® Version 2 Software

FOR HANDHELD AND PORTABLE PARTICLE COUNTERS

Intuitive Windows-based software dramatically reduces operator training time.



Track particle count data, identify trends and eliminate particle contamination sources.



#### OPERATING SYSTEM SOFTWARE (OS):

- Microsoft® Windows® 2000 Professional (SP1 or greater)
- Microsoft Windows XP® Professional
- Microsoft Internet Explorer® 5.x or greater

| HARDWARE         | MINIMUM                      | RECOMMENDED             |
|------------------|------------------------------|-------------------------|
| CPU type         | Intel® Pentium® III, 500 MHz | Intel Pentium IV, 1 GHz |
| Free Disk Space  | 500 MB                       | 4 GB                    |
| Memory / RAM     | 128 MB                       | 256 MB                  |
| Video Display    | 800x600*                     | 1024x768                |
| Serial/COM ports | 1 RS-232                     | 2 RS-232 or 2 USB       |

\* Non-English Windows systems require a minimum video display of 1024x768

Find out more!

To see an online demonstration of PortAll Version 2, visit [www.hachultraanalytics.com/PortAll](http://www.hachultraanalytics.com/PortAll) to sign up for our next web conference.



**AMERICAS:** 481 California Avenue, Grants Pass, Oregon 97526 USA, Toll Free: 1 800 866 7889, Tel: 1 541 472 6500, Fax: 1 541 479 3057  
**EUROPE / ASIA:** 6, route de Compois, C.P. 212, CH-1222 Vésenaz, Geneva, Switzerland, Tel: 41 22 855 91 00, Fax: 41 22 855 91 99  
**WEBSITES:** [www.anatel.com](http://www.anatel.com) | [www.particle.com](http://www.particle.com) | [www.hachultra.com](http://www.hachultra.com)